

## QUICK GUIDE

The purpose of this template is to explore the described problem even further (Legacy Challenge on Digital Sustainable impact). To explore the problem you will use the tree metaphor to get an overview of consequences and causes. From the overview you should try to find a more specific and narrow focus area with opportunities going forward. You don't

1. Begin by writing the main problem on a post-it note and stick it on the trunk of the tree.
2. Explore the root causes by brainstorming and mapping any causes and sub-problems contributing to the main problem. Write each root cause on a post-it note and stick it on the roots of the tree.
3. Explore the consequences by brainstorming and mapping all the consequences and sub-problems that derive from the main issue. Write each consequence on a post-it note and stick it on the branches and leaves of the tree.
4. Now it's time to narrow down and select a specific problem, that you want to contribute to solving through your legacy efforts (see criteria under 'Narrowing Our Scope').
5. Continue and use the template "Framing Our Legacy Challenge & Impact" to describe the selected problem in detail.



## IDENTIFYING OUR LEGACY POTENTIAL

LEGACY LAB TOOLKIT

wonderful  
copenhagen

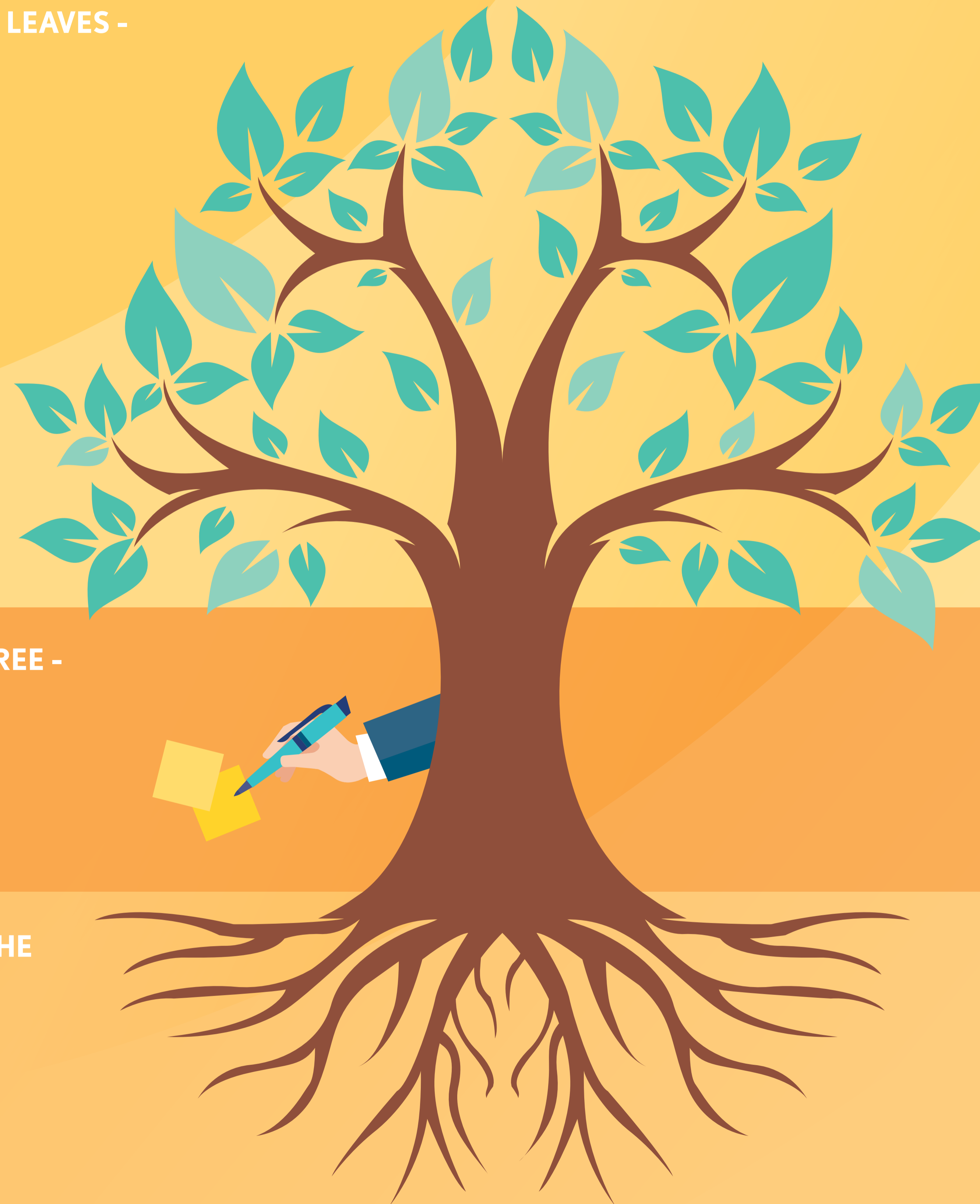
# IDENTIFYING OUR LEGACY POTENTIAL

What problem could serve as an opportunity for the event to have a lasting effect on the local destination and global society at large?

## 3. BRANCHES AND LEAVES - CONSEQUENCES

## 1. TRUNK OF THE TREE - MAIN PROBLEM

## 2. THE ROOTS OF THE TREE - CAUSES



# NARROWING OUR SCOPE

What concrete problem will be the focus of your legacy efforts?

## 4. SELECTING THE FOCUS OF YOUR LEGACY PROJECT

- IMPACT
- CHANGE
- RELEVANCE
- NOVELTY
- MEASUREMENT

